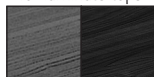


Catalogue pages 238 to 243

Guarantee, standards and shade card



2 choices of finish for laminate tops



Cherry Etimoe

LA LB

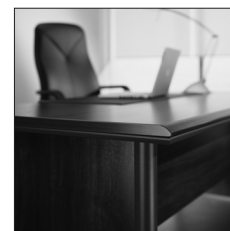
From stock

1 finish for melamine cupboard shells



Graphite grey MY

From stock



Product description

- Made from counterweighted particle board, density 650 kg/m³;
- Particle board used is compliant with the E1 standard (control of formaldehyde emissions);
- The board is covered with several sheets of paper which are compressed and then impregnated with resin to create the wood effect laminate surface;
- Fire safety classification: in accordance with the FDP 92-057 standard, particle board greater or equal to 18 mm in thickness is classified as M3 (combustible, moderately flammable);

Tops

- 47 mm thick, covered in laminate*;
- "Gull wing" post-formed front and rear edges;
- Straight side edges protected by a 2 mm thick strip of ABS;
- *Tops are divided into 2 layers: the bottom layer, 19 mm in thickness, is made from MDF and covered in graphite grey PVC (angle of curvature 30°), whilst the top layer, 28 mm in thickness, is covered in low pressure laminate, 3/10 thickness.

Panel legs

- 25 mm thick melamine-faced panel legs;
- Twin tubular uprights, ø 60 mm, made from MDF covered in graphite grey PVC;
- ABS stabilizer feet, ø 60 mm, adjustable through 10 mm;
- Height of work surface: 720 mm.

Extension units

- it is advisable to link 80 cm depth desks only together.

Modesty panels

- 20 mm thick melamine-faced structural modesty panels, height 350 mm. Attached using screws and metal inserts, modesty panels provide desks with added rigidity;
- Straight edges covered in melamine.

Cupboards

- Melamine shells and shelves in a graphite grey (MY) finish;
- Doors and optional decorative tops in wood effect melamine to match the desks;
- High cupboards are fitted with a fixed shelf. Other shelves are adjustable at 32 mm intervals;
- Doors are fitted with metal handles in a graphite grey finish;
- High cupboards have 3 point locks, medium and low cupboards have 1 point locks. Glass doors are not lockable;
- Glass doors have wooden frames and are fitted with transparent glass;
- When fitted with optional metal shelves, high cupboards will hold 5 rows of suspension files;
- Width 80 cm. Depth 40.7 cm.

Cable management

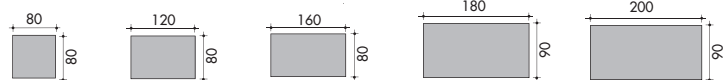
- Horizontal and vertical: optional.

Maintenance

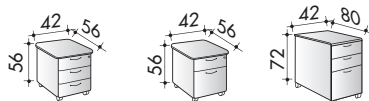
Maintenance advice: use soapy water and avoid products which contain solvents.

Desktops and easy reach storage units - the range

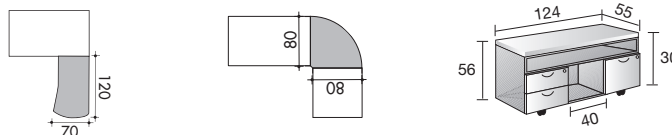
Desking



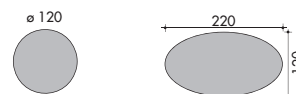
Easy reach storage units



Extension units

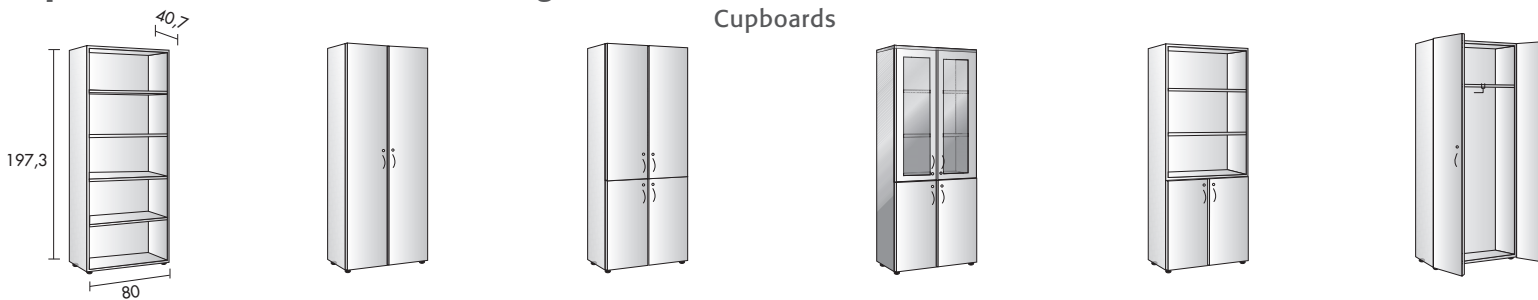


Meeting tables

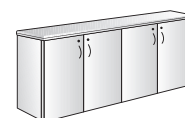


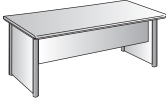
Cupboards and credenzas - the range

Cupboards



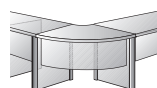
Credenza



	description	code		price ex. VAT
		Right-hand return	Left-hand return	
Desking				
Desks. Optional extras: ① ② ③ ④ ⑤ ⑥ ⑦				
	W. 80 x 80 cm	3 560 048 + finish		£ 448
	W. 120 x 80 cm	3 560 050 + finish		£ 519
	W. 160 x 80 cm	3 560 052 + finish		£ 544
	W. 180 x 90 cm	3 560 055 + finish		£ 676
	W. 200 x 90 cm	3 560 057 + finish		£ 706

Extension units

Curved 90° link unit. To link 2 desks D. 80 cm or 1 desk D. 80 cm to 1 desk D. 90 cm



90° link unit	3 560 256 + finish		£ 257
Optional modesty panel	3 560 858 + finish		£ 241

Suspended return in graphite grey melamine on pedestal with graphite grey melamine shell, wood effect laminate drawer fronts and graphite grey metal handles.

W. 120 x D. 70 x H. 67 cm on pedestal



1 box drawer + 1 filing drawer	3 560 593 + finish	3 560 590 + finish	£ 627
3 box drawers	3 560 594 + finish	3 560 591 + finish	£ 627

Mobile return unit with graphite grey melamine shell, wood effect laminate drawer fronts and graphite grey metal handles. Fitted with 2 box drawers and 1 filing drawer. The filing drawer is mounted on telescopic runners and opens to a depth of 100%. Central locking mechanism.



W. 124 x D. 55 cm	3 560 427 + finish		£ 672
-------------------	--------------------	--	-------

Easy reach storage units

Mobile pedestals with graphite grey melamine shells, wood effect laminate drawer fronts and top and graphite grey metal handles. Built-in pen tray. Selective drawer opening. Central locking mechanism. Filing drawers are mounted on telescopic runners and open to a depth of 100%. W. 42 x D. 56 x H. 56 cm.



1 box drawer + 1 filing drawer	3 560 854 + finish + MY		£ 340
3 box drawers	3 560 855 + finish + MY		£ 340

Desk height pedestals with melamine shells, wood effect laminate drawer fronts and top and graphite grey metal handles. Built-in pen tray. Selective drawer opening. Central locking mechanism. Filing drawers are mounted on telescopic runners and open to a depth of 100%. W. 42 x D. 80 x H. 72 cm.



2 box drawers + 1 filing drawer	3 560 853 + finish + MY		£ 531
---------------------------------	-------------------------	--	-------

Meeting tables

Circular table, ø 120 cm. Supported by 3 tubular metal support legs, ø 80 mm. H. 74 cm.




ø 120 cm	3 560 802 + top fin. + SC		£ 593
----------	---------------------------	--	-------

Oval table, 220 x 120 cm. Supported by 4 tubular metal support legs, ø 80 mm. H. 74 cm.



W. 220 x D. 120 cm	3 560 799 + top fin. + SC		£ 851
--------------------	---------------------------	--	-------

description	code	price ex. VAT
Cupboards and credenzas		
19 mm thick melamine shells in a graphite grey finish. Doors in wood effect melamine or glass. Metal handles in a graphite grey finish. W. 80 x D. 40.7 cm. Fitted with 4 stabilizer feet, H. 35 mm, adjustable through 15 mm.		
Optional extras: ⑧ ⑨ ⑩ ⑪		
Cupboards, H. 197.3 x W. 80 x D. 40.7 cm - 4 shelves.		
① 	① Open shelves	3 560 828 MY £ 241
② 	② 2 standard doors	3 560 821 + door fin. + MY £ 394
③ 	③ 4 standard doors	3 560 824 + door fin. + MY £ 452
④ 	④ 1/3 standard doors + 2/3 glass doors with wooden frames	3 560 822 + door fin. + MY £ 540
⑤ 	⑤ 1/3 standard doors + 2/3 bookshelves	3 560 825 + door fin. + MY £ 340
⑥ 	⑥ Wardrobe unit	3 560 819 + door fin. + MY £ 436
Cupboards, H. 133.3 x W. 80 x D. 40.7 cm - 3 shelves.		
⑦ 	⑦ Open shelves	3 560 827 MY £ 203
⑧ 	⑧ 2 standard doors	3 560 814 + door fin. + MY £ 311
⑨ 	⑨ 2 glass doors with wooden frames	3 560 816 + door fin. + MY £ 457
Cupboards, H. 69.3 x W. 80 x D. 40.7 cm - 1 shelf.		
⑩ 	⑩ Open shelves	3 560 826 MY £ 120
⑪ 	⑪ 2 standard doors	3 560 807 + door fin. + MY £ 220
⑫ 	⑫ Refrigerator unit	3 560 860 + door fin. + MY £ 851
Credenza, W. 160 x H. 72.1 cm. Comprising 2 juxtaposed cupboards, complete with decorative top in a wood effect finish. Optional extras: ⑨ ⑩ ⑪		
	4 standard doors	3 560 058 + door fin. + MY £ 540

